



Vision for Solomon Terrace Community Precinct

To create a vibrant and engaging place in the heart of Morawa for the people of Morawa. A central place where people from all ages can connect, hang out and enjoy the many experiences on offer. A safe place for everyone to come to and enjoy time and time again.

KEY ZONES:

Zone 1: Naturescape

A reflective and tranquil space amongst nature

- Shady trees
- Winding paths
- Landscaped gardens
- Seating areas
- Art walk



Zone 2: Meeting Point

The central heart and gathering space for year round events and activation. A safe space for the community

- Space for activation and events such as artisan markets, food festivals
- Safe family spaces
- Natureplay
- Flying fox
- Junior play

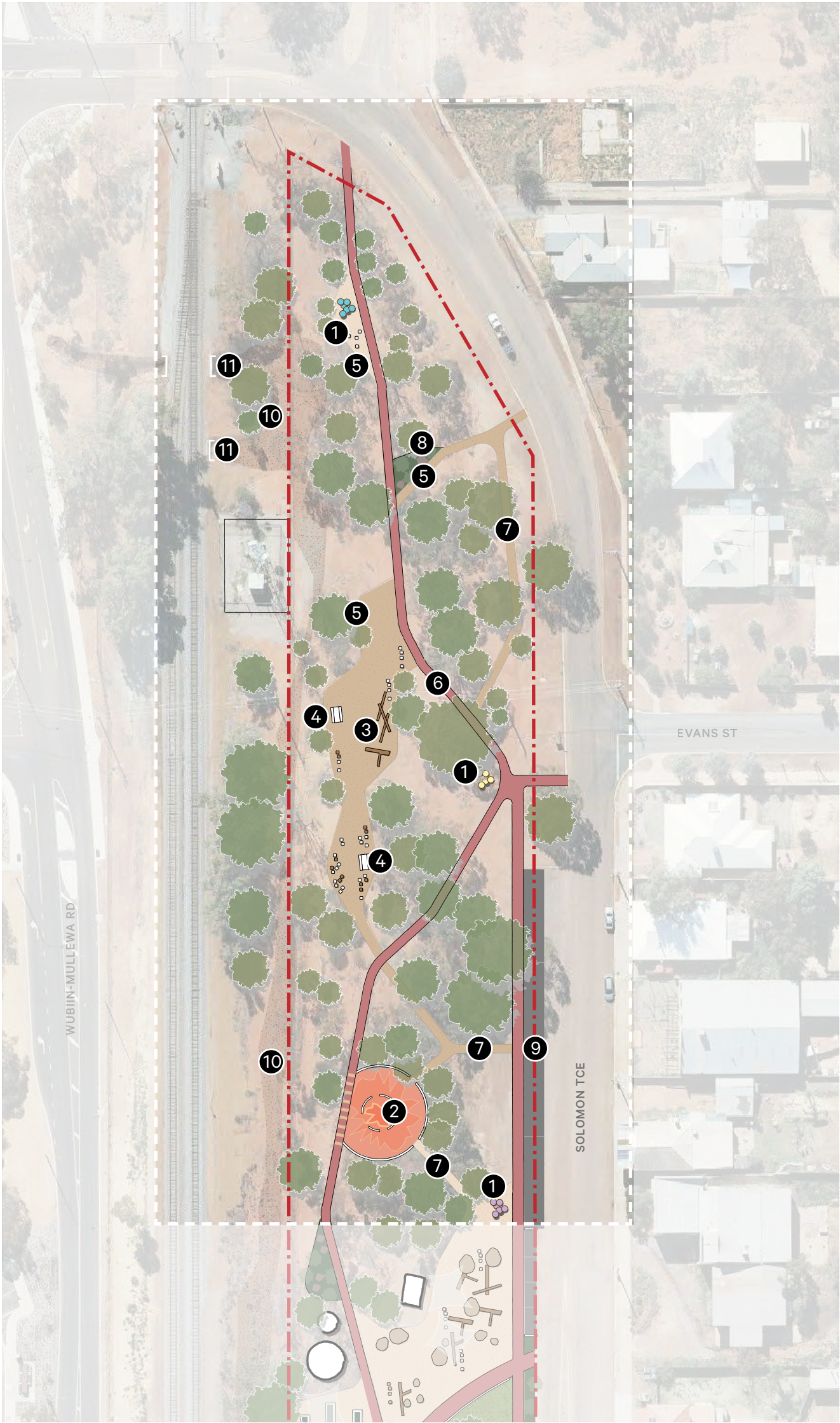


Zone 3: Activezone

Active recreation and play for the community

- Pump track
- Adventure play such a parkour circuit

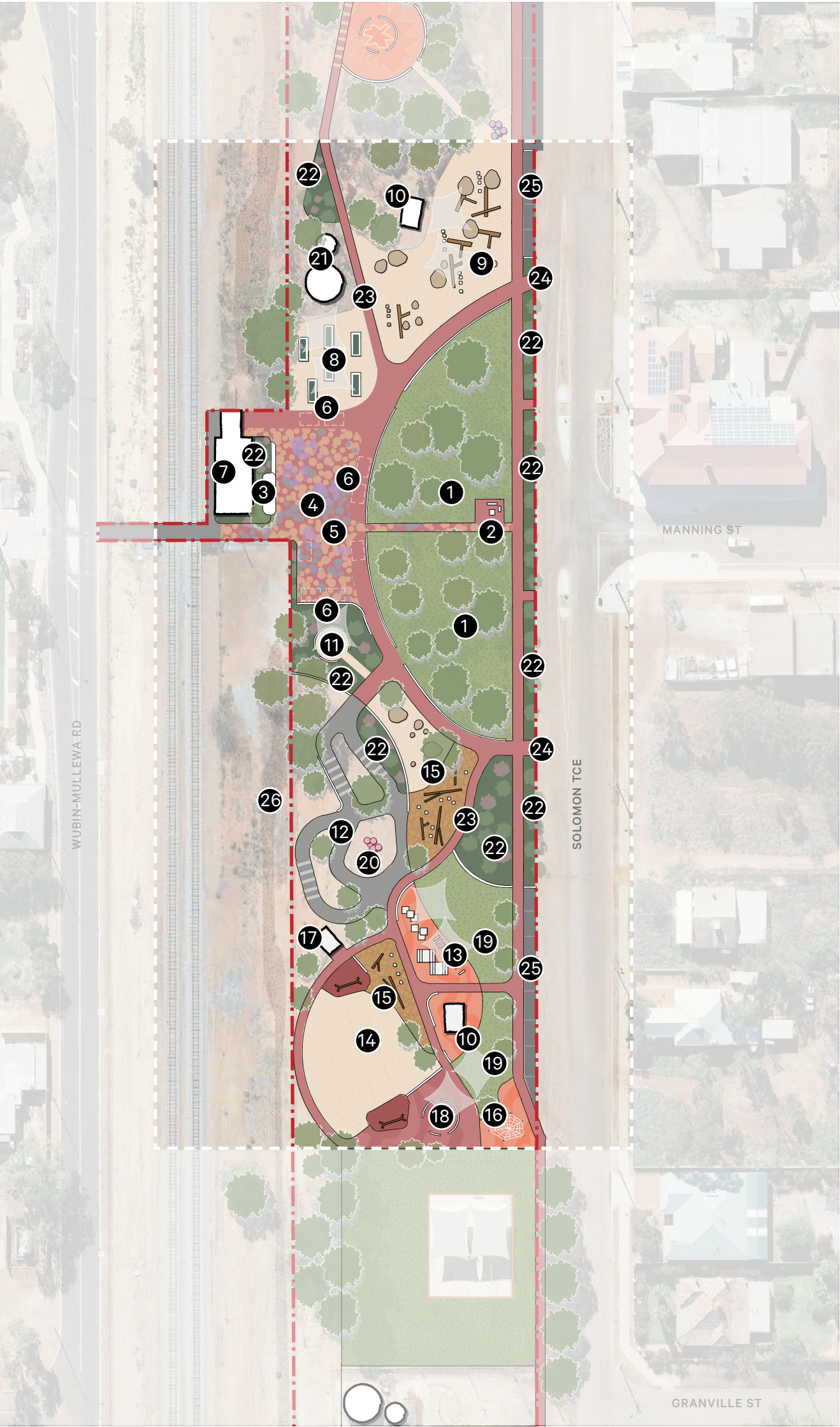




Legend

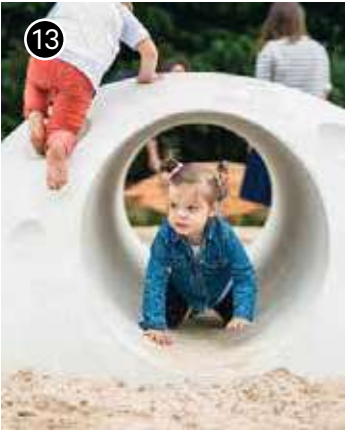
- | | |
|--|-----------------------|
| 1. Sculpture / interpretive art | 9. Truck parking bays |
| 2. Gathering space / yarning circle | 10. Drainage channel |
| 3. Small nature play / accidental play | 11. Drainage culvert |
| 4. Picnic bench | |
| 5. Park bench | |
| 6. Sealed path | |
| 7. Unsealed path | |
| 8. Native garden bed / planting | |





Legend

- | | | |
|--|-------------------------------------|--|
| 1. Grassed Prater Park | 8. Community garden | 18. Seating / gathering space |
| 2. Existing park seating | 9. Large nature play | 19. Lawn space |
| 3. Raised platform / informal stage | 10. Sheltered seating | 20. Sculpture / interpretive art |
| 4. Main gathering space for community events such as movie nights, artisan markets | 11. Gathering space for girls | 21. Rainwater tanks |
| 5. Community led ground mural | 12. Junior scooter track | 22. Native garden bed / planting |
| 6. Designated space (bays) for vendors and food tracks during community events | 13. Junior adventure play | 23. Sealed path |
| 7. Existing train station building | 14. Flying fox | 24. Gated vehicle access onto footpath |
| | 15. Small nature play | 25. Parallel parking bays |
| | 16. Climbing web | 26. Drainage channel |
| | 17. Unisex accessible public toilet | |



22-439 Solomon Terrace Community Precinct

Zone 2 - Meeting Point

Date: 17 May 2023

Scale: 1:1000 @ A3

File: 22-439

A

Staff: II

Checked: SZ

DRAFT



element.

Level 18, 191 St Georges Terrace, Perth Western Australia 6000.
PO Box 7375 Cloisters Square, Perth Western Australia 6850.
T. +61 8 9289 8300 | E. hello@elementwa.com.au elementwa.com.au



Legend

- | | |
|--|---|
| 1. Pump track for older kids and teenagers | 8. Sealed path |
| 2. Adventure play / parkour circuit | 9. Existing rainwater tanks |
| 3. Sheltered seating are with potential for a BBQ facility | 10. Existing access road to rainwater tanks |
| 4. Nature play | 11. Drainage channel |
| 5. Existing Lions Park play ground and lawn (fenced) | 12. Drainage culvert |
| 6. Sculpture / interpretive art | |
| 7. Native garden bed / planting | |