

# SHIRE OF MORAWA

## Rates and Budget Information

Email: [admin@morawa.wa.gov.au](mailto:admin@morawa.wa.gov.au)  
Address: 26 Winfield Street, Morawa

Phone: (08) 9971 1204  
Web: [www.morawa.wa.gov.au](http://www.morawa.wa.gov.au)

Facebook: [www.facebook.com/shireofmorawa](https://www.facebook.com/shireofmorawa)



### Due Dates for 2024-2025 Rates

1st Instalment / or

payment in full due by: **4 October 2024**

2nd Instalment due by: **13 December 2024**

3rd Instalment due by: **21 February 2025**

4th Instalment due by: **2 May 2025**

### Pay your rates the easy way

We've now made it easy for you to manage payment of your rates.

Using **Payment Hubb**, you will be able to pay in full, set up payment by instalments or apply to pay via a special arrangement.

Just scan the QR code on your rates notice to get started.

[morawa.wa.gov.au](http://morawa.wa.gov.au)



### How are my rates calculated?

How much you pay depends on the value of your property. This value is determined by the State Government's Landgate (formerly Valuer General's Office [VGO]) in one of two ways, depending on the type of property you own:

- For properties that are predominately used for rural purposes, the estimated Unimproved Value (UV) of the land only is used.
- For properties that are predominately used for residential, industrial and business, the Gross Rental Value (GRV) is used.

This is the estimate of the total rent that may be received from the property in one year.

This value is then multiplied by the Shire's rate-in-the-dollar to determine your property's annual rates.

For example: GRV of \$250 per week x 52 weeks = \$13,000.

\$13,000 x rate-in-the-dollar = Rates total.

The Shire's rate-in-the-dollar is determined each year at budget time. Rates-in-the-dollar may vary for different categories of UV or GRV properties. This is called a Differential Rating System. Each year a minimum rate applies which is the minimum amount any property owner will be asked to contribute. This ensures a fair contribution is made by all property owners, regardless of their property's value. For any enquires regarding valuation related issues, please contact Landgate via email:

[vs@landgate.wa.gov.au](mailto:vs@landgate.wa.gov.au) or visit the Landgate website: [www.landgate.wa.gov.au/valuations/valuations-for-rates-and-taxes](http://www.landgate.wa.gov.au/valuations/valuations-for-rates-and-taxes)

**Shire of Morawa**  
Collection Calendar 24-25



JULY						
MON	TUE	WED	THU	FRI	SAT	SUN
1	2	3	4	5	6	7
8	9	10	11	12	13	14
15	16	17	18	19	20	21
22	23	24	25	26	27	28
29	30	31				

AUGUST						
MON	TUE	WED	THU	FRI	SAT	SUN
			1	2	3	4
5	6	7	8	9	10	11
12	13	14	15	16	17	18
19	20	21	22	23	24	25
26	27	28	29	30	31	

SEPTEMBER						
MON	TUE	WED	THU	FRI	SAT	SUN
						1
2	3	4	5	6	7	8
9	10	11	12	13	14	15
16	17	18	19	20	21	22
23	24	25	26	27	28	29
30						

OCTOBER						
MON	TUE	WED	THU	FRI	SAT	SUN
				1	2	3
4	5	6	7	8	9	10
11	12	13	14	15	16	17
18	19	20	21	22	23	24
25	26	27	28	29	30	31

NOVEMBER						
MON	TUE	WED	THU	FRI	SAT	SUN
				1	2	3
4	5	6	7	8	9	10
11	12	13	14	15	16	17
18	19	20	21	22	23	24
25	26	27	28	29	30	

DECEMBER						
MON	TUE	WED	THU	FRI	SAT	SUN
						1
2	3	4	5	6	7	8
9	10	11	12	13	14	15
16	17	18	19	20	21	22
23	24	25	26	27	28	29
30	31					

JANUARY						
MON	TUE	WED	THU	FRI	SAT	SUN
		1	2	3	4	5
6	7	8	9	10	11	12
13	14	15	16	17	18	19
20	21	22	23	24	25	26
27	28	29	30	31		

FEBRUARY						
MON	TUE	WED	THU	FRI	SAT	SUN
					1	2
3	4	5	6	7	8	9
10	11	12	13	14	15	16
17	18	19	20	21	22	23
24	25	26	27	28		

MARCH						
MON	TUE	WED	THU	FRI	SAT	SUN
					1	2
3	4	5	6	7	8	9
10	11	12	13	14	15	16
17	18	19	20	21	22	23
24	25	26	27	28	29	30
31						

APRIL						
MON	TUE	WED	THU	FRI	SAT	SUN
	1	2	3	4	5	6
7	8	9	10	11	12	13
14	15	16	17	18	19	20
21	22	23	24	25	26	27
28	29	30				

MAY						
MON	TUE	WED	THU	FRI	SAT	SUN
		1	2	3	4	5
6	7	8	9	10	11	12
13	14	15	16	17	18	19
20	21	22	23	24	25	26
27	28	29	30	31		

JUNE						
MON	TUE	WED	THU	FRI	SAT	SUN
					1	2
3	4	5	6	7	8	9
10	11	12	13	14	15	16
17	18	19	20	21	22	23
24	25	26	27	28	29	30

Residential Rubbish Collection

Due Dates for Rates Notices

Public Holidays



# Completed Projects for 2023-2024

Old Roads Board Landscaping/ Storage Shed - \$258k

Cemetery Carpark and Entrance Road- \$373K

Netball Shed Replacement - \$103k

Caravan Park Ablutions - \$174k

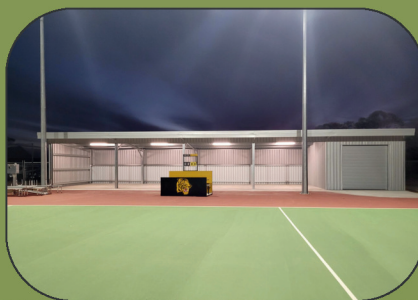
Winfield Street Light Replacement - \$83k

Jubilee Park & Electric Vehicle Charging Station- \$142k

Morawa- Yalgoo Road Upgrade- \$795K

Nanekine Road Widen and Seal- \$475k

Aerodrome Vermin Proof Fencing- \$128k



## Upcoming Projects for 2024-2025

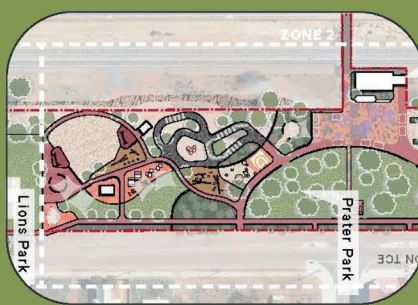
Winfield Street Drainage - \$405K

Evaside Road Black Spot Project - \$550k

Solomon Tce Precinct Redevelopment - \$386K

Rec Centre Roof Repairs - \$700k

Broad Ave and Gill St Footpath Upgrades- \$125k



## Other Major Expenditure for 2024-2025

Maintenance Parks and Reserves- \$473k

Roads Construction- \$2.673 million

Plant Replacement- \$864k

Tourism/Area Promotions- \$341k

Swimming Pool Maintenance- \$130k

Maintenance Sports/ Building Facilities- \$237k

